



Crafton Hills College
Workshops &
Performance

March 22, 2016

Workshops: 10am-Noon @ LRC 226

Performance: 2:00 pm @ Finkelstein Performing Arts Center

Workshops

10 am–Noon
LRC 226

Performance

2:00 pm
Finkelstein Performing
Arts Center



Special Thanks

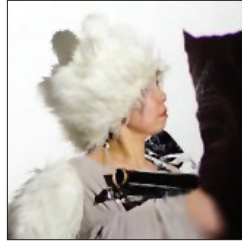
Project Director
Professor Snezana Saraswati Petrovic

Staging Director
Kevin Palkki

Documentation Director
Masato Shirahashi

Project Support
Crafton Hills College
Professor Mark Dennis McConnell

Performers



Satomi Akutsu

Lives and works in Tokyo, Japan. Akutsu is a dancer, choreographer, and yoga instructor. She studied Butoh dance by Akira Kasai, Butoh master and a founder of the Tenshi-Kan, and a modern dance called "Duncan," which was established by the world-renowned dancer Isadora Duncan, by Mary Sano. Akutsu has been involved in solo dances and various projects with musicians, performers, and visual artists.



Takeshi Kanemura

Southern California-based painter and performance artist, who lives and works in Los Angeles. He has transcended traditional Japanese art and absorbed those practices into his current art form of mixed media performance art. With the influences of Butoh, traditional large scale Japanese brush stroke painting, and traditional music, his current pieces incorporate all these elements with Americanized flair, to humbly represent the new present-day American status: the amalgamation of one's identity. His goals with his art are to promote cultural awareness and the embracing of all cultural heritages.



Ranwakaba

Motion Graphic Artist/Illustrator. Born in Tokyo and raised in Funabashi, Chiba, Japan. Ranwakaba's career started as an illustrator after he graduated from the Toyo Institute of Art and Design in 1997. Recently, he started producing live performances and events based on his theme of "graphics, sounds, and movements." This theme is incorporated with the visual space and surrounding environment. Ranwakaba also plays bass guitar and acts as a VJ in his band "My Triangle Man," which reflects his creative combination of different techniques and formats in order to create his art.



Hiroshi Shimizu

Percussionist/phonographer. Lives and works in Tokyo, Japan. Shimizu creates environments and thinks relationships between him and others (time, human, nonhuman, and material), by playing the percussions, such as ethnic and electrical instruments, toys, and junk objects. He has supported numerous bands and projects by incorporating his sound. He is also searching for the possibility of Environmental music by collaborating Yoga with an ambient unit called "Aarchitex."